

The background features a central white rectangular area with a blue, textured, water-droplet effect. This white area is surrounded by a dark blue border. In the corners of the image, there are white line-art outlines of city street maps.

# BRISTOL ROVERS

*HOME FAN GUIDE*

# CONTENTS

**3 - HISTORY OF THE GAS**

**4 - PURCHASING TICKETS**

**5 - WHICH STAND?**

**6- YOUR TICKET - SEATED**

**7 - YOUR TICKET - TERRACE**

**8- TRAVELLING BY CAR**

**9 - PETROL STATIONS**

**10 - PARKING**

**11 - OTHER MODES OF TRANSPORT**

**12 - FINDING YOUR SEAT OR STAND**

**13 - USING YOUR TICKET**

**14 - DISABLED SUPPORTERS/  
ACCESSIBILITY**

**15 - ACCESSIBILITY AREAS**

**16 - FAMILY AREAS**

**17 - CAPTAIN'S QUARTERS**

**18 - CAPTAIN GAS**

**19 - MASCOT PACKAGES**

**20 - YOUNG PIRATES**

**21 - MATCHDAY ITINERARY**

**22 - FANZONE**

**23 - BARS**

**24 - CLUB SHOP**

**25 - MATCHDAY PROGRAMME**

**26 - CORE POLICY INFORMATION**

**27 - SOCIALS**

**28 - CONTACT US**

# HISTORY OF THE GAS



Bristol Rovers were formed, as the Black Arabs, in September 1883, following a meeting of five young men at a restaurant on Stapleton Road, in the Eastville district of the city.

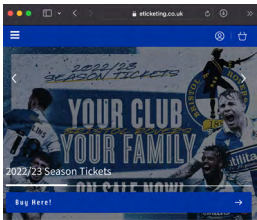
The name of the club was derived from the black shirts worn by the players and a rugby club known as the Arabs, who played on an adjacent pitch, at Purdown, in East Bristol

The club became known as Eastville Rovers in 1884/85 and continued to play friendly matches for a number of seasons, though they moved grounds on several occasions before moving to a ground at Eastville in 1897.

Professionalism and a further name change, to Bristol Eastville Rovers, came at the start of the 1897/88 season, with the name Bristol Rovers being adopted prior to the start of the following campaign.

For the majority of Rovers history, the Eastville Stadium is where we played home games. Our nickname, The Gas, derived from our Eastville home due to the gasworks next to the stadium. Rovers remained at Eastville for 89 years before moving to Twerton Park, the home of Bath City, where they remained until 1996. The beginning of the 1996/97 season saw us move back to Bristol and into our current home, The Memorial Stadium.

# PURCHASING TICKETS:



## ONLINE:

The easiest way to purchase tickets is via our eticketing site - <https://www.eticketing.co.uk/bristolrovers/>. This website will allow you to browse all available tickets for released upcoming fixtures.

When purchasing tickets online, you will have the option to receive a digital E-Ticket or a Paper Ticket.

If you choose an E-ticket, these will be sent to your email prior to each match. From here, you can download them onto your phone.

If you choose Paper Tickets, these will be sent out to you in the post and arrive prior to the game, or they can be collected from the club shop.



## IN PERSON:

*Non-Match days*

On non-matchdays, tickets can be purchased from our club shop, at The Memorial Stadium.

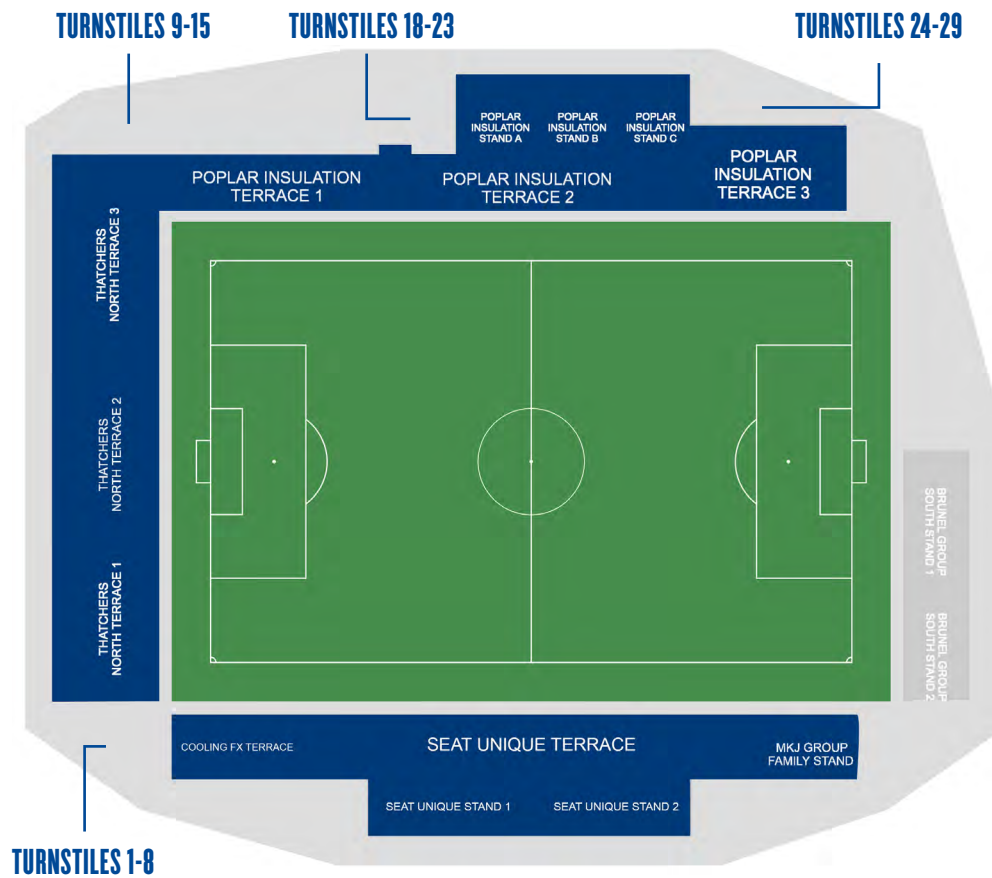
Our club shop is open **Monday - Friday, 10am – 4pm.**

*Matchdays:*

On Matchdays, if any remain available, tickets can be purchased from the ticket office.

The ticket office is located to your left as you enter the main Memorial Stadium entrance. Tickets will be available here from **10am – Kick Off.**

# CHOOSING A STAND:



**Poplar Insulation Stand:** Our best seating in the house, with fantastic views over the pitch. This stand is also home to our hospitality guests.

**Poplar Insulation Terrace:** Spanning the width of the touchline, this area offers close proximity to the dugouts. The home to many of our longstanding season ticket holders.

**Thatcher's Terrace:** Our largest collection of home fans standing behind the goal. This area creates the most atmosphere on a matchday, bring your singing voice!

**Cooling FX Terrace:** Our family centric terrace offers close proximity to the tunnel, the atmosphere here feeds of the Thatcher's end, offering a lively but safe environment.

**Seat Unique Stand:** Our only seated area that spans the length of the touchline, great views combined with a relaxed atmosphere. This area also has access to its own bar.

**Seat Unique Terrace:** Situated in front of the stand area, offering the same great views but provides the option of a traditional terrace experience.

**MKJ Group Family Stand:** Our focal point for families visiting The Memorial Stadium, an independent stand offering the ideal location to start your journey as a young Rovers fan.

**Brunel Group South Stand:** This stand is fully seated, offering a behind the goal experience without the need to stand and a calmer atmosphere.

# YOUR TICKET - SEATED



## 1) Fixture

Confirmation of the game the ticket is valid for, and the date.

## 2) Stand

This confirms the stand that you will be seated within.

## 3) Row and Seat

This confirms what row and seat you will be sat within.

## 4) Price Class

This confirms what price class your ticket is, Such as Adult or 16-21.

## 5) Entrance

This confirms which entrance you should use to enter The Mem

## 6) Barcode

Enter this into the turnstiles scanner to gain access to The Mem.

## 7) Kick off

Confirmation of the Kick off time

# YOUR TICKET - STANDING



## 1) Fixture

Confirmation of the game the ticket is valid for, and the date.

## 2) Stand

This confirms which stand within the stadium that you will be stood in.

## 3) Price Class

This confirms what price class your ticket is, Such as Adult or 16-21.

## 4) Entrance

This confirms which entrance you should use to enter The Mem.

## 5) Barcode

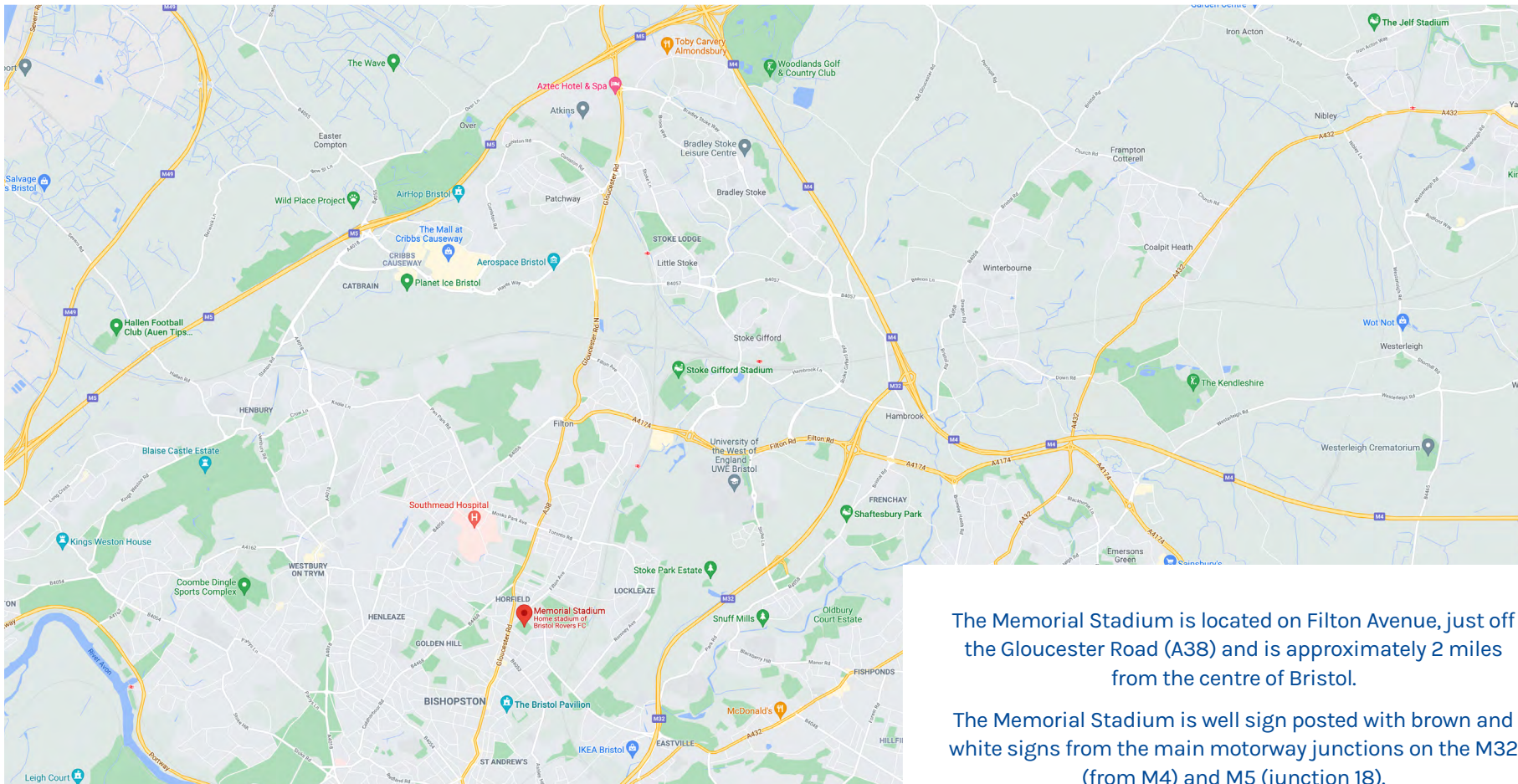
Enter this into the turnstiles scanner to gain access to The Mem.

## 6) Kick off

Confirmation of the Kick off time.

# GETTING TO THE MEM

## *DIRECTIONS BY CAR*



The Memorial Stadium is located on Filton Avenue, just off the Gloucester Road (A38) and is approximately 2 miles from the centre of Bristol.

The Memorial Stadium is well sign posted with brown and white signs from the main motorway junctions on the M32 (from M4) and M5 (junction 18).

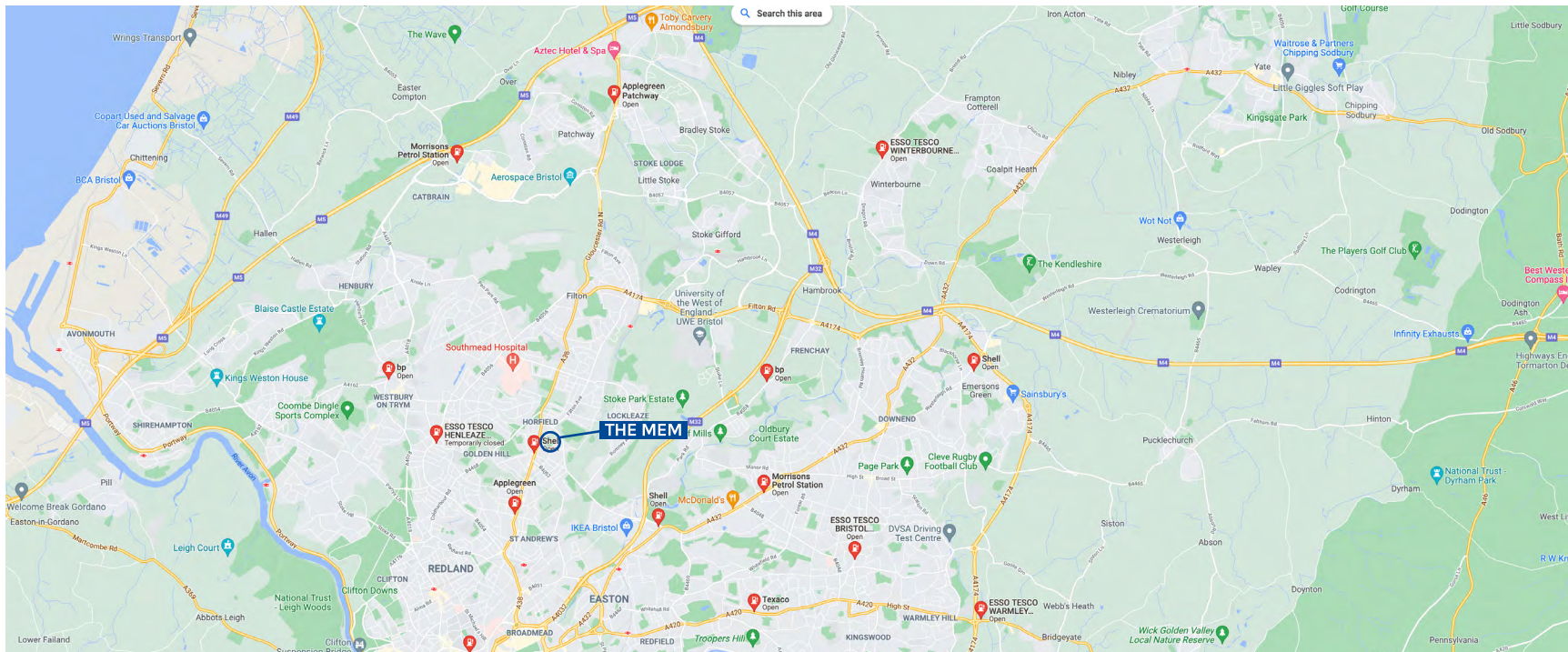


# GETTING TO THE MEM

## PETROL STATIONS

There are many petrol stations along Gloucester Road, but if you're looking for a stop right next to the ground there's only really one - a garage that lies a few hundred yards down Gloucester Road. There are other ESSO, BP and TEXACO stations further down the road in either direction.

If you're looking for a good value fill for a long journey home then you're best bet is one of the major supermarkets. If you're heading back down Muller Road, the Tesco store near the M32 junction offers petrol at a low price (24 hour) and for those heading back along Gloucester Road, the Walmart ASDA store in Patchway (24 hour) - clearly visible from the M5 - is probably the best value fuel stop you'll find.



# PARKING AT THE MEM

The Memorial Stadium has limited parking. There may be street parking available in the roads close to the stadium, ensuring you adhere to local road signs.

We would encourage all supporters travelling to the ground to use public transport wherever possible.

The Club has 30 disabled bays which are currently fully booked by home season ticket holders. If you wish to be added to the waiting list please contact the Club. The Club provides a handful of parking spaces for our disabled visitors which can be booked via **Clare McDonagh** ([ticketing@bristolrovers.co.uk](mailto:ticketing@bristolrovers.co.uk))

The available numbers vary between matches for both home and away fans depending on anticipated crowd sizes.

With very few exceptions, finding a space within a five to ten-minute walk is relatively easy - parking on Muller Road is a popular choice as is Gloucester Road although this is often more difficult.

If Muller Road and Gloucester Road are busy then there are many other roads across the other side of Gloucester Road - travel past the Wellington pub along Kellaway Avenue and you'll find another area of roads often used for match day parking. Although there is plenty of on-street parking available, please be reminded that it is a predominately residential area so please ensure that private driveways are not obstructed.



# GETTING TO THE MEM

## OTHER MODES OF TRANSPORT

The Memorial Stadium is located on Filton Avenue, just off the Gloucester Road (A38) and is approximately 2 miles from the centre of Bristol. The only access point to the stadium is from Filton Avenue.

### BY BUS

The closest bus stop to the Memorial Stadium is Filton Avenue.

All local buses are now wheelchair accessible, and many have low floor access and all recognised assistance animals can travel for free.

### BY TAXI

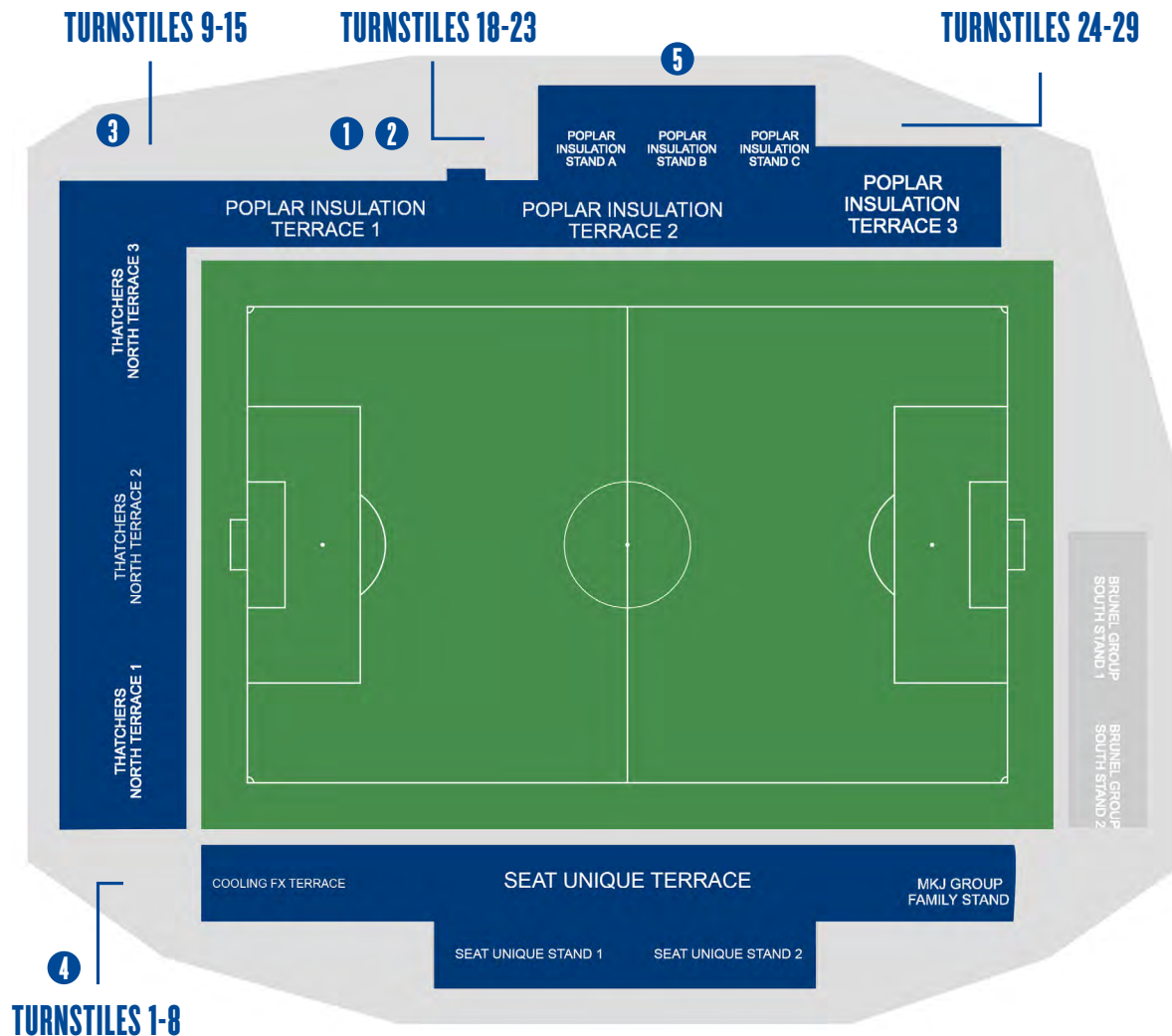
Uber and Private Hire services operate in Bristol, and many are wheelchair accessible and can provide a suitable alternative to the bus or car. The recommended point of drop off is Filton Avenue as this is the only access point to the ground.

### BY TRAIN

The nearest station is Filton Abbey Wood, approximately 1.5 miles from the ground. The most common local station is Bristol Parkway.

The Memorial Stadium is in the north of Bristol at just over 2 miles from Bristol's city centre and slightly further from Bristol Temple Meads, the main railway station.

# FINDING YOUR SEAT OR STAND:



- 1** For tickets to the Poplar Insulation Terrace 1 and 2, enter through turnstiles 18-23.
- 2** For tickets to Poplar Insulation Stands 1, 2 and 3, enter through turnstiles 18-23.
- 3** For tickets to Thatcher's North Terraces 1, 2 and 3, enter through turnstiles 9-15.
- 4** For tickets to the Cooling FX Terrace, Seat Unique Stand, Seat Unique Terrace MKJ Group Family Stand and the Brunel Group South Stand, enter through turnstiles 1-8.
- 5** For hospitality guests, enter through the club shop gate besides turnstiles 18-23. Follow the Bristol Rovers history graffiti wall and up the stairs.

There will be instructions at each turnstile explaining how to use your E-ticket, Match Ticket, or Season card to enter the ground from here.

# USING YOUR TICKET

## MATCH TICKETS & E TICKETS

PLACE YOUR TICKET/PHONE INSIDE OF THE SCANNER

WAIT FOR GREEN/BLUE LIGHT TO FLASH

GO THROUGH TURNSTILE



## SEASON TICKET CARDS

PLACE YOUR CARD ON TOP OF THE SCANNER

WAIT FOR GREEN/BLUE LIGHT TO FLASH

GO THROUGH TURNSTILE



# ACCESSIBILITY

## *BRISTOL ROVERS FC DISABLED SUPPORTERS ASSOCIATION*

The official Bristol Rovers FC Disabled Supporters Association (BRFC DSA) is an independent supporters group formed in May 2017.

It is run by disabled supporters for disabled supporters.

### *THEIR GOAL:*

To represent all disabled supporters of Bristol Rovers FC in their dealings with the club.

To assist with improving the facilities and policies that affect disabled supporters.

To bring together disabled supporters along with their family and friends - by encouraging and organising social events and meetings to air views and gather feedback that can be presented to the Football Club.

### *OUR REPRESENTATIVES:*

Our representatives will aid any disabled supporters who are concerned about their visit to The Memorial Stadium.

For assistance please contact:

Email: [DSAbristolrovers@outlook.com](mailto:DSAbristolrovers@outlook.com)

Twitter: [@BristolroversDS](https://twitter.com/BristolroversDS)

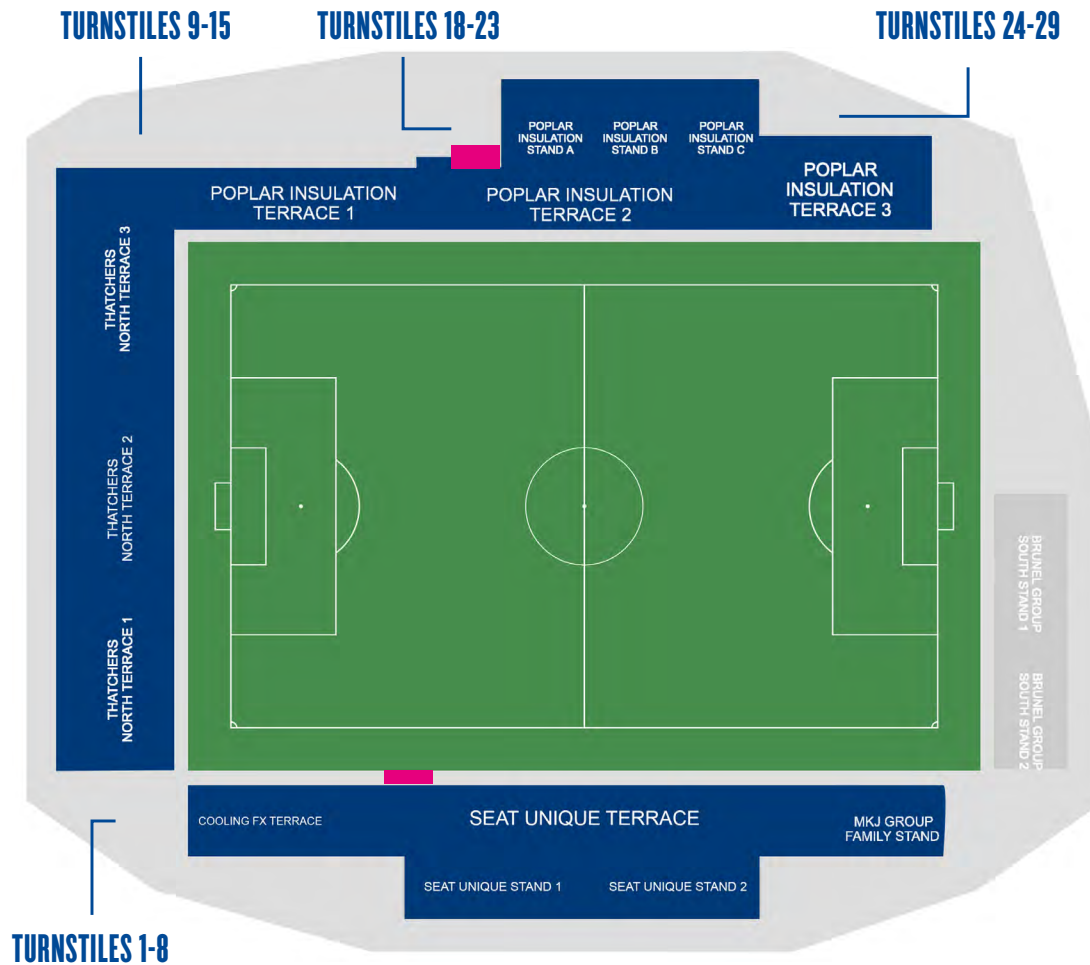
Facebook: [@DSAbristolrover](https://www.facebook.com/DSAbristolrover)

Facilities:

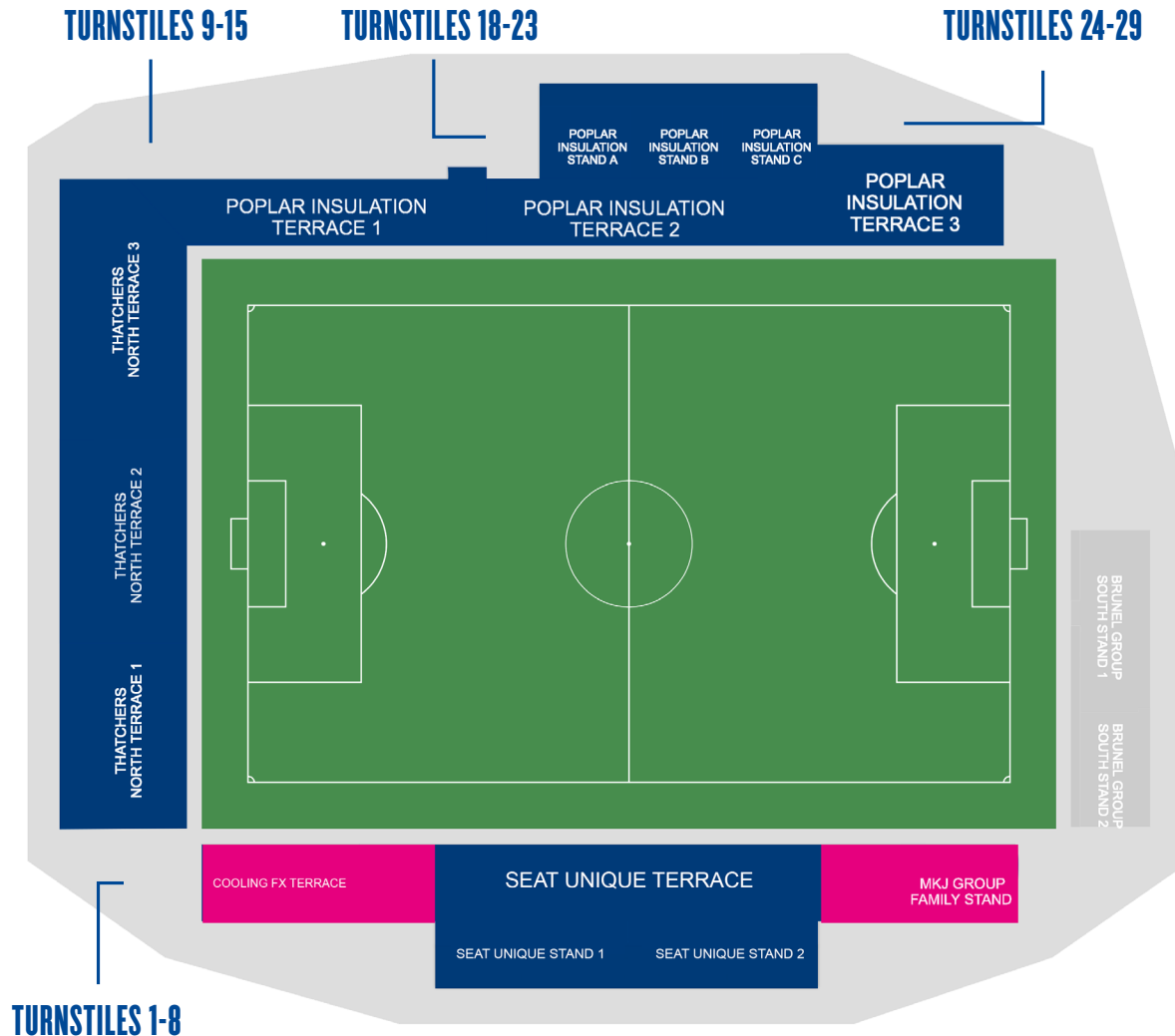
The club shop, reception, executive boxes, all bars, and the ticket office all have disabled access and the only area of the ground not currently accessible is the Uplands Stand (East).

# ACCESSIBILITY AREAS

*HIGHLIGHTED*



# FAMILY AREAS



For families, we recommend purchasing tickets in the MKJ group family stand (*highlighted in pink*). To access the MKJ Group Family Stand, enter through turnstiles 1-8 (See Stadium Map).

For families looking for a family friendly terrace experience, we recommend the Cooling FX terrace (*highlighted in pink*).

## Family Activities:

Behind the MKJ family group stand we will have a inflatable goal for children.

We frequently run kids competitions, visit the club shop to ask about the latest one and see what great prizes can be won!

## Food:

Each kiosk will have free fruit for children alongside a Kids menu.



# CAPTAIN'S QUARTERS



EACH MATCH IS 90 MINUTES  
(TWO HALVES OF 45 MINUTES)

THE GAS PLAY THEIR HOME GAMES IN  
BLUE AND WHITE QUARTERS



EACH TEAM HAS ELEVEN PLAYERS  
INCLUDING A GOALKEEPER

THE TEAMS SWAP ENDS AT HALF TIME  
(45 MINUTES)



BRISTOL ROVERS' NICKNAME IS 'THE GAS'



# CAPTAIN GAS



Captain Gas is our official mascot who will walk around the pitch prior to the game. Be sure to say hi and grab a selfie!

# MASCOT PACKAGES

## WHO:

Children ages 5 - 16

## INCLUDES:

Opportunity to play on the pitch during the first team warm up

Watch the strikers shooting practice from pitch side

Official photography

Line up with the players in the tunnel

Walk out with the team onto the pitch

Take your place in the stands and enjoy the game

## FOR MORE INFO:

Please visit the **MASCOT PACKAGES** at

[bristolroverscommunity.org.uk/](http://bristolroverscommunity.org.uk/)



# YOUNG PIRATES



The Young Pirates is a membership scheme for the young supporters 5-16 of Bristol Rovers FC.

Junior Members will receive:

- Pack in the post, worth £20
- Membership card
- Free tickets to three games (with a paying adult)
- Access to book Young Pirates events
- Chance to be a mascot

Memberships cost £20 and can be purchased here:

<https://www.eticketing.co.uk/bristolrovers/Memberships/Details/Index>

# MATCHDAY ITINERARY

**3PM K.O**

**7.45PM K.O**

12.30PM

1.15PM

1.30PM

2.55PM

3.00PM

3.00PM

4.00PM

4.45PM

6.00PM

6.00PM

6.15PM

7.40PM

7.45PM

8.30PM

8.45PM

9.30PM

FAN ZONE OPENS

PLAYERS ARRIVE AT THE MAIN ENTRANCE IN FRONT OF THE RETAIL AREA

TURNSTILES OPEN

THE TEAMS AND MASCOTS ENTER THE PITCH

THE MATCH KICKS OFF

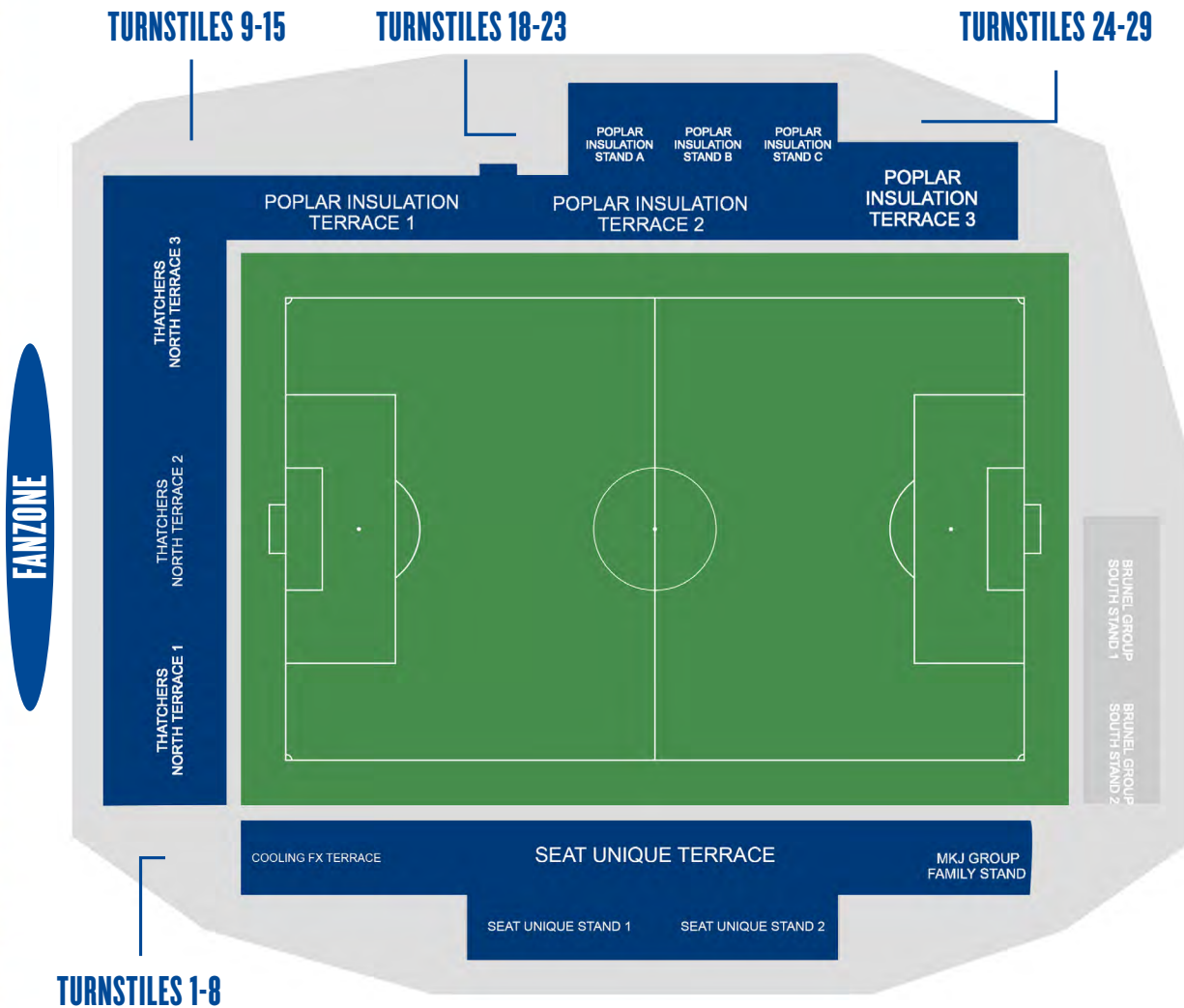
HALF-TIME ENTERTAINMENT AND BIRTHDAY ANNOUNCEMENTS

SECOND HALF BEGINS

FULL TIME



# FAN ZONE



The fan zone is located behind the North stand (Thatcher's terrace) and is an excellent place to spend time pre-match. The Fan zone opens at 12:30 and remains open until Kick off. It is then re-opened at half time for supporters in the Thatcher's Terrace and West Stand.

## What the Fan Zone has to offer:

**Ollie's Bar:** General Bar with all your favourites.

**The Gasworks:** Craft ales and specialist ciders

**Perky Meerkat:** Barista Coffee

**Gas Grill:** Fried Chicken, Chips, Burgers etc.

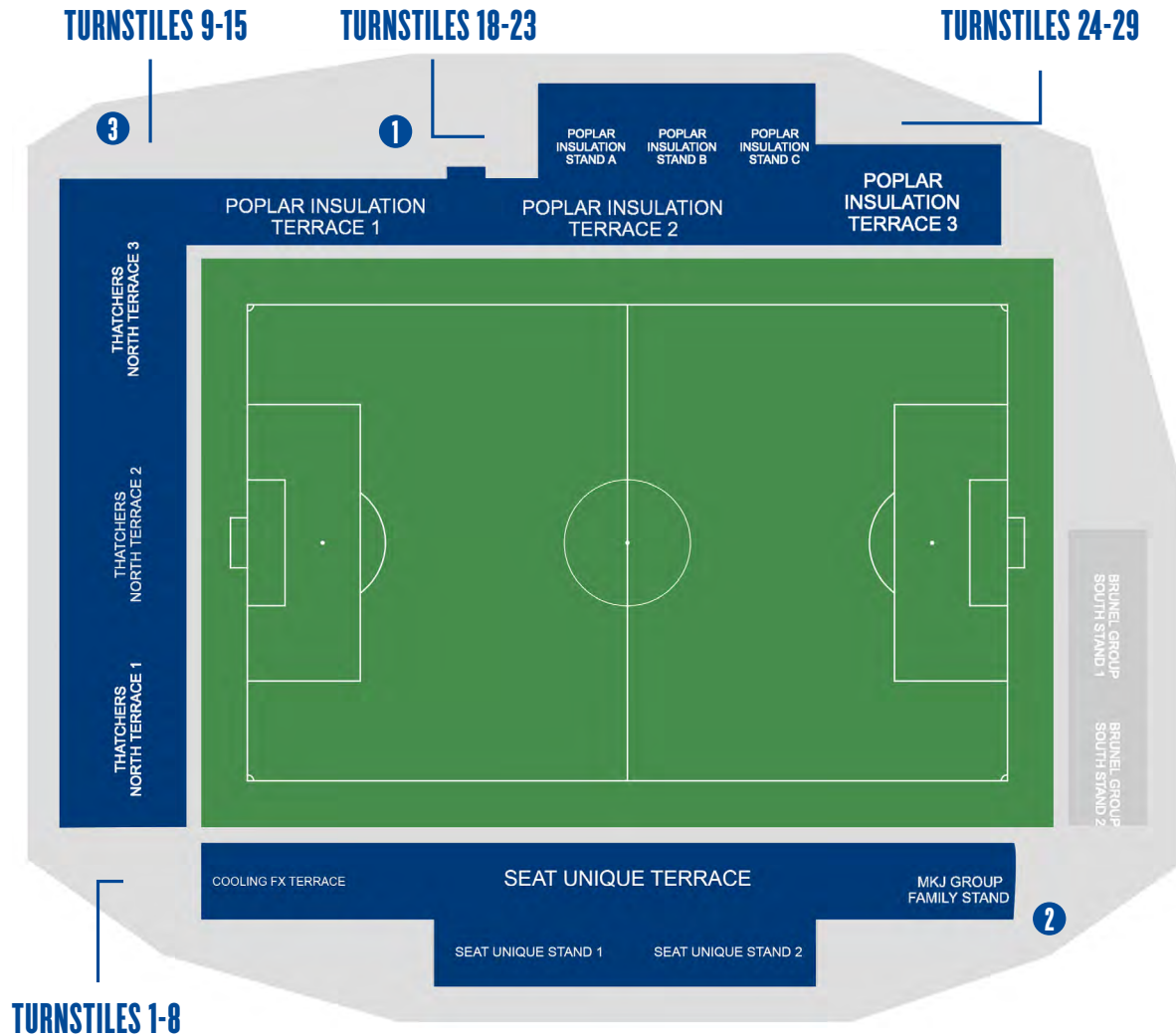
**Jerk King:** Bristol's best Jerk Chicken

**Live Music:** Live music is played by local, popular bands on the main stage.

## Matchday Shop

**INSIDE GROUND (FROM 1.30PM) Food Kiosks:** Phat Pasty (Award winning pasties + pies); Hot Drinks; Cold Drinks; Confectionary; Rollover Hot Dogs

# BARS



- 1** Butcombe Bar

Located in the Poplar Stand, entrance to here available through turnstiles 18-23.

Open 1:30pm – KO and then again at half time.
- 2** The Liquor Box

Located behind the West Stand, you can get to this bar through turnstiles 1-8.

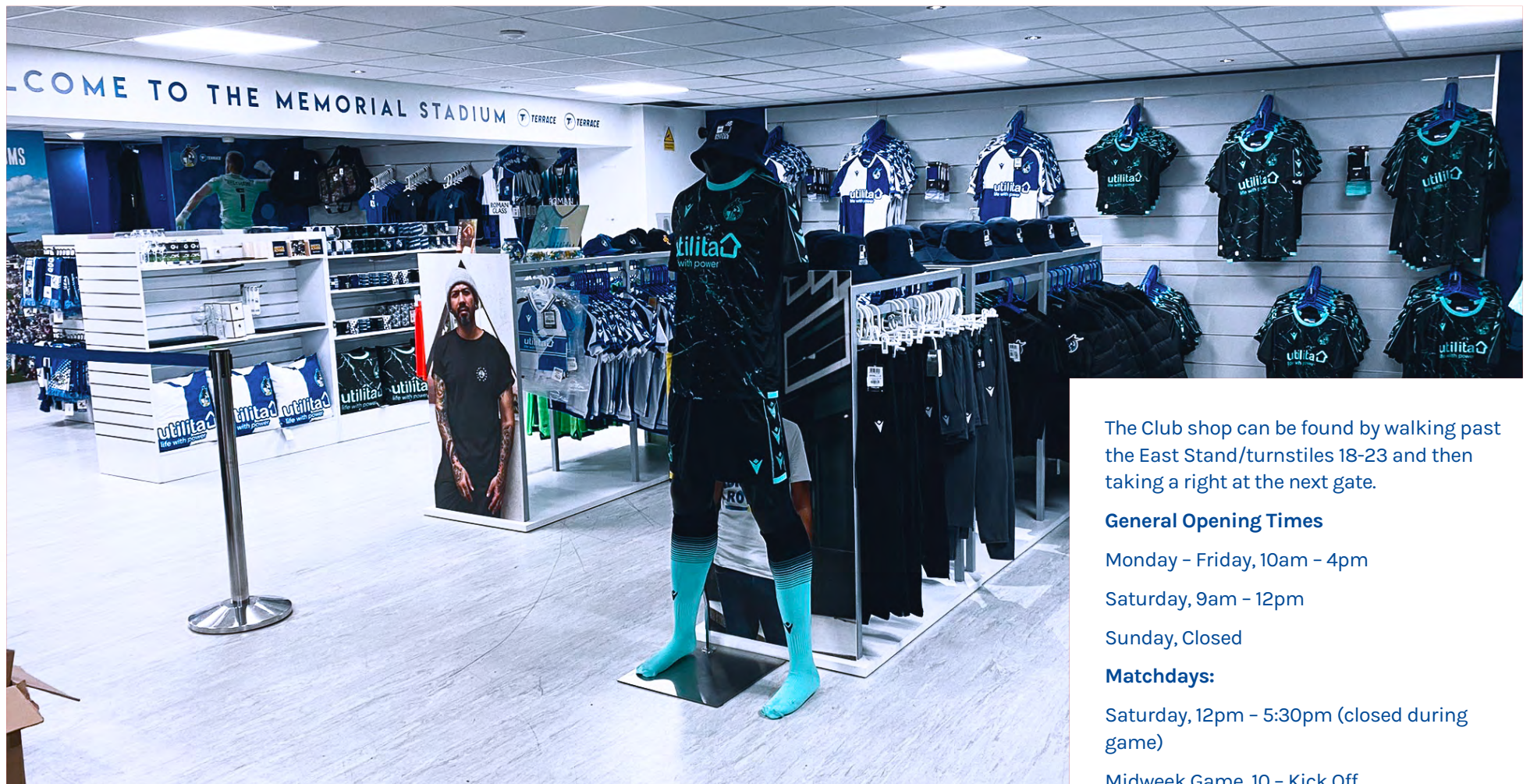
Open 1:30pm – KO and then again at half time.
- 3** Thatcher's Bar

Located at the North Stand, you can get to this bar through the Fan Zone or turnstiles 9-15.

Open 11am – KO, Half-time and post-match.

The Thatcher's Bar also includes Irene's Kitchen which sells Burgers, Hot Dogs, Loaded Fries, Kids Meals etc.

# CLUB SHOP



The Club shop can be found by walking past the East Stand/turnstiles 18-23 and then taking a right at the next gate.

#### **General Opening Times**

Monday – Friday, 10am – 4pm

Saturday, 9am – 12pm

Sunday, Closed

#### **Matchdays:**

Saturday, 12pm – 5:30pm (closed during game)

Midweek Game, 10 – Kick Off



# MATCHDAY PROGRAMME



Our Official matchday programme, The Pirate, is an essential read for any Rovers Supporter and includes Exclusive interviews, pre-match content and much more.

Our Matchday Programmes are £3.50, Card only, and can be purchased from various vendors on site.

Programmes are included, free of charge, in all hospitality packages.

To purchase programmes online visit [curtis-sport.com](http://curtis-sport.com) and go to the Bristol Rovers section.



# CORE POLICY INFORMATION

## NON-PERMITTED ITEMS WITHIN THE STADIUM:\*

- flares and pyrotechnics
- Bottles or cans - cameras, digital cameras, video equipment
- Vuvuzelas
- large bags
- Pushchairs

## SMOKING POLICY

In accordance with our ground regulations\*, smoking is not permitted in the stadium and the Memorial Stadium is a smoke-free stadium. This includes any type of e-cigarette or vapours.

## FOUL AND ABUSIVE LANGUAGE:

Any supporter who persistently uses expletives could face ejection or a ban from the stadium. Any supporter that becomes victim of any abuse can report it through the 'kick it out' app. The app can be downloaded on iPhone and Android devices.

Anti-Discrimination (under Foul and abusive language):

At Bristol Rovers we embrace inclusion, with anti-discrimination and anti-victimisation at the core of our values and beliefs. At all levels of the club, we have pledged to play an active role in supporting meaningful inclusion in attempts to put an end to discrimination and victimisation.

**We have a zero-tolerance policy on discrimination.**

\*For full ground regulations visit

<https://www.bristolrovers.co.uk/contentassets/Od5983e4e80b436497d19390f098dbc7/club-charter-2.pdf>

## STAY AWAY FROM THE YELLOW:

Supporters are reminded to stay off any areas that are marked yellow whilst attending matches at The Memorial Stadium.

This is for your safety but is also a ground safety regulation that must be adhered to.

The club's ground capacity has just returned to its maximum, and your help to maintain this would be greatly appreciated.

*\*Amnesty bins will be placed around the stadium and provide you with the chance to bin any of your prohibited items, such as alcohol. Failure to comply with this will result in a ban.*

# SOCIAL MEDIA



**OFFICIALBRISTOLROVERS/**



**@OFFICIAL\_BRFC**



**@OFFICIAL\_BRFC**



**OFFICIALBRFCTV**



# CONTACT US

IF YOU HAVE ANY FEEDBACK, OR IF YOU NEED ASSISTANCE PRIOR  
TO A GAME, PLEASE CONTACT US.

## *GENERAL ENQUIRIES*

Bristol Rovers Football Club,

The Memorial Stadium,

Filton Avenue,

Bristol,

BS7 0BF

TEL: 0117 9096648.

FAX: 0117 9074312.

FOR ALL AWAY FAN REQUESTS, PLEASE CONTACT

Clare McDonagh on [ticketing@bristolrovers.co.uk](mailto:ticketing@bristolrovers.co.uk).

